



7th International Conference on Crack Paths

Numerical simulation of fatigue crack paths in orthopedic plates

Filip Vucetic^a, Katarina Colic^a, Aleksandar Grbovic^b, Aleksandar Sedmak^{b*}, Simon Sedmak^a, Snezana Kirin^a, Filippo Berto^c

^aInnovation center of the Faculty of Mechanical Engineering, Kraljice Marije 16, 11000 Belgrade, Serbia

^bFaculty of Mechanical Engineering, University of Belgrade, Kraljice Marije 16, 11000 Belgrade, Serbia

^cFaculty of Engineering, NTNU, Richard Birkelands vei 2b, 7491 Trondheim, Norway

Abstract

This study is aimed to explain the behaviour of different orthopedic plate designs, under uniaxial bending, with cracks initiated in the stress concentration areas. Extended finite element method (XFEM) in ANSYS software was used for simulating the fatigue crack growth in 5 orthopedic plates with different geometries. Results for crack length vs. plate geometry indicated plate D as the best option regarding residual life. Crack paths are analysed in all 5 plates to explain such a behaviour, indicating benefits of initial crack growth into length, followed by growth into depth.

© 2021 The Authors. Published by Elsevier B.V.

This is an open access article under the CC BY-NC-ND license (<https://creativecommons.org/licenses/by-nc-nd/4.0>)

Peer-review under responsibility of CP 2021 – Guest Editors

Keywords: XFEM, fatigue crack growth, orthopedic plate

1. Main text

Fatigue fracturing has shown to be the most common failure mode of in-service orthopedic plates, [1]. Fatigue, as a process of defect accumulation, i.e. crack initiation and propagation due to bending cycles, is likely to occur even under low cycling load. Also, orthopedic surgeon's experience is crucial for avoiding overloads of the implant due to

* Corresponding author.

E-mail address: asedmak@mas.bg.ac.rs

incorrect implantation, which can easily cause crack initiation in combination with inevitable stress concentration. Figure 1 presents cracking and fatigue failure of an orthopedic plate.

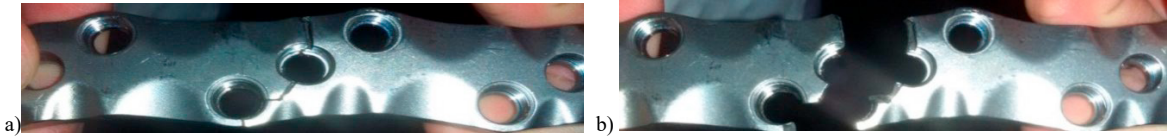


Fig. 1. a) Cracking and b) failure of an orthopedic plate

Numerical simulations are widely used for analysing different behaviour of various implants, such as artificial hips, orthopedic plates and dental implants, including structural integrity, [2-8] and life assessment, [9-12]. This study considers different orthopedic plate designs, under uniaxial bending, with cracks initiated at the stress concentration areas. Toward this aim, numerical simulations by extended finite element method (xFEM) are made to evaluate remaining life of orthopedic plates depending on different geometries, so that the optimal one can be selected.

2. Fatigue crack growth simulation in orthopedic plates by the extended Finite Element Method

Modeling of cracks by using classical FEM approach, requires mesh to contain discontinuity of geometry. Problem is even more complicated if crack growth is considered, requiring re-meshing after every step of crack growth. The xFEM enables modeling of arbitrary crack shape without modification of mesh when crack grows, [12-13].

Later on some modifications are introduced, [14] and commercial software developed, like the one used here, ANSYS [15]. In any case xFEM has become a standard for numerical simulation of fatigue crack growth, as shown in number of successful applications, summarized in [16], and shown in details in [17-21].

Extended finite element method (XFEM) in ANSYS software was used for simulating the fatigue crack growth in orthopaedic plates. Analysis includes 5 different plate geometries, marked with: A, B, C, D and E. Cross section B-B on each plate's drawing shows the location and size ($R = 0.5$ mm) of initial cracks. Material parameters: $R_e = 1020$ MPa, $R_m = 1074$ MPa, $E = 96$ GPa, $\nu = 0,35$, $C = 3,70 \times 10^{-13}$, $m = 2,31$. Figure 2 show geometry for all 5 plates.

Three different body weights have been considered for simulation of four-point bend testing, applying the maximal bending moments in upper tibia region, as calculated according to [22], and shown in Table 3. Total of 60 steps were set in ANSYS.

Table 1. Loading according to ref. [9].

| Plate type | 60 kg BW kN | 90 kg BW kN | 120 kg BW kN |
|------------|----------------|----------------|-----------------|
| A | 2.2 | 3.3 | 4.4 |
| B | 2.2 | 3.3 | 4.4 |
| C | 2.2 | 3.3 | 4.4 |
| D | 2.6 | 3.9 | 5.2 |
| E | 2.3 | 3.45 | 4.6 |

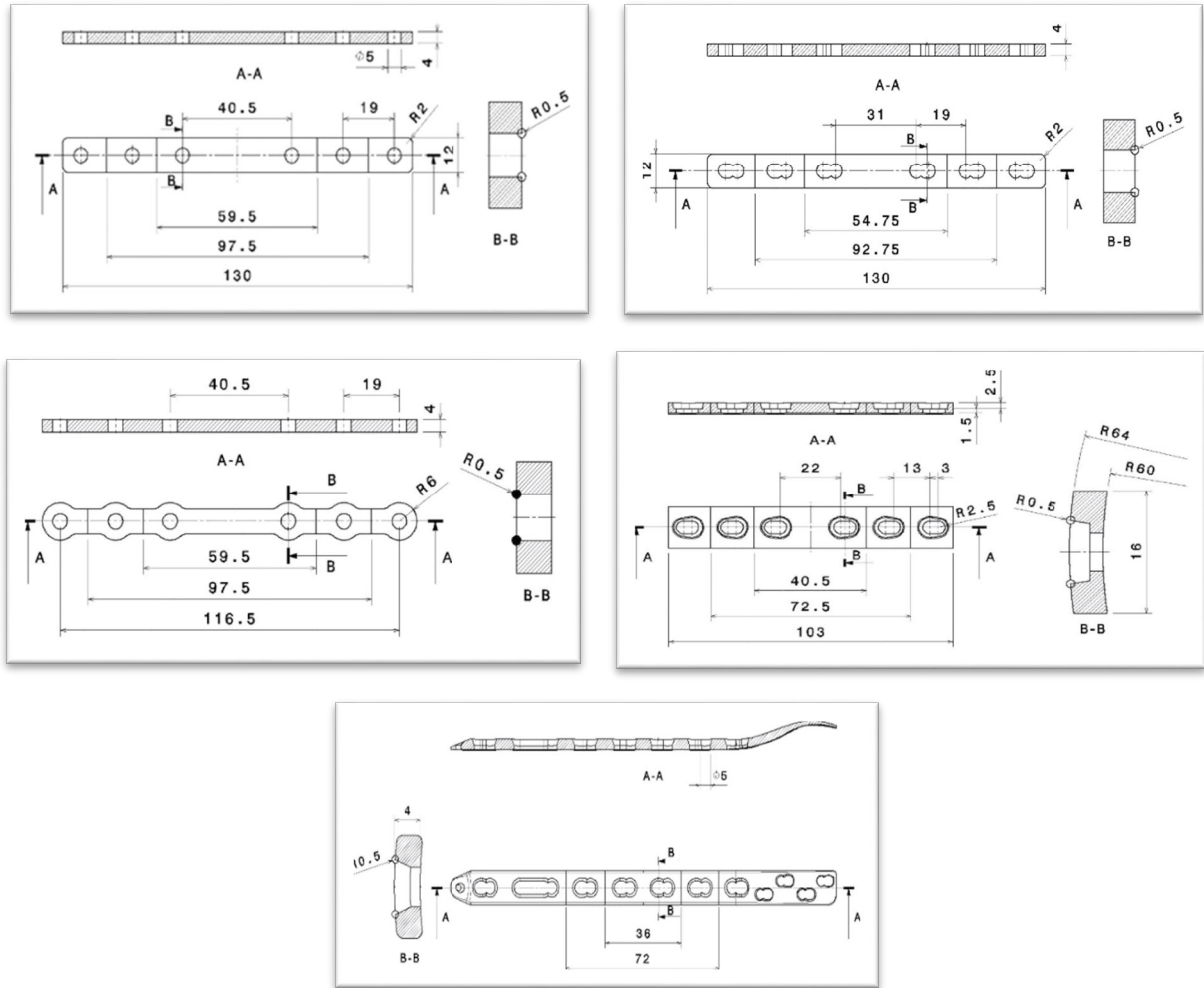


Fig. 2. Different shapes of orthopedic plates from A to E

3. Results

Results are shown in Fig. 3-6 for plates B-E, respectively (plate A is already presented in [9]), in form of crack growth paths. One can see that the maximal obtained crack length is more than 2 mm longer than the plate thickness. This is explained by crack growth equally through the plate thickness and along the surface, up to the point where the crack predominantly starts propagating along the surface.

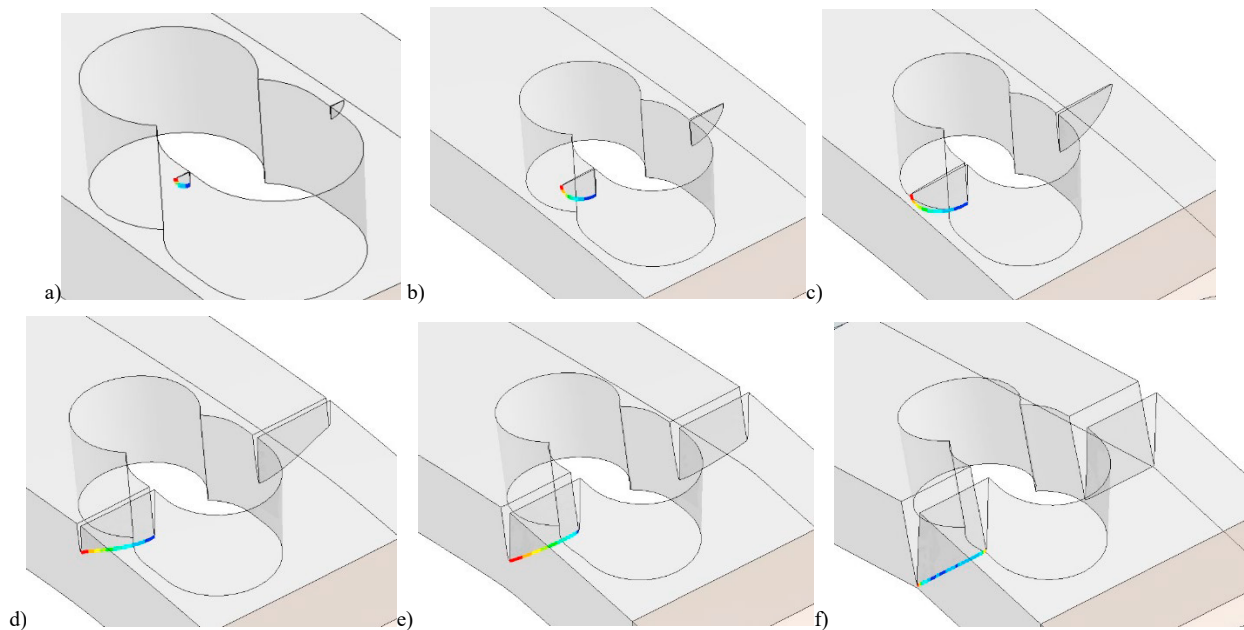


Fig. 3. Crack growth in plate B after a) 2537, b) 18183, c) 24573, d) 26017, e) 26499, f) 26595 cycles

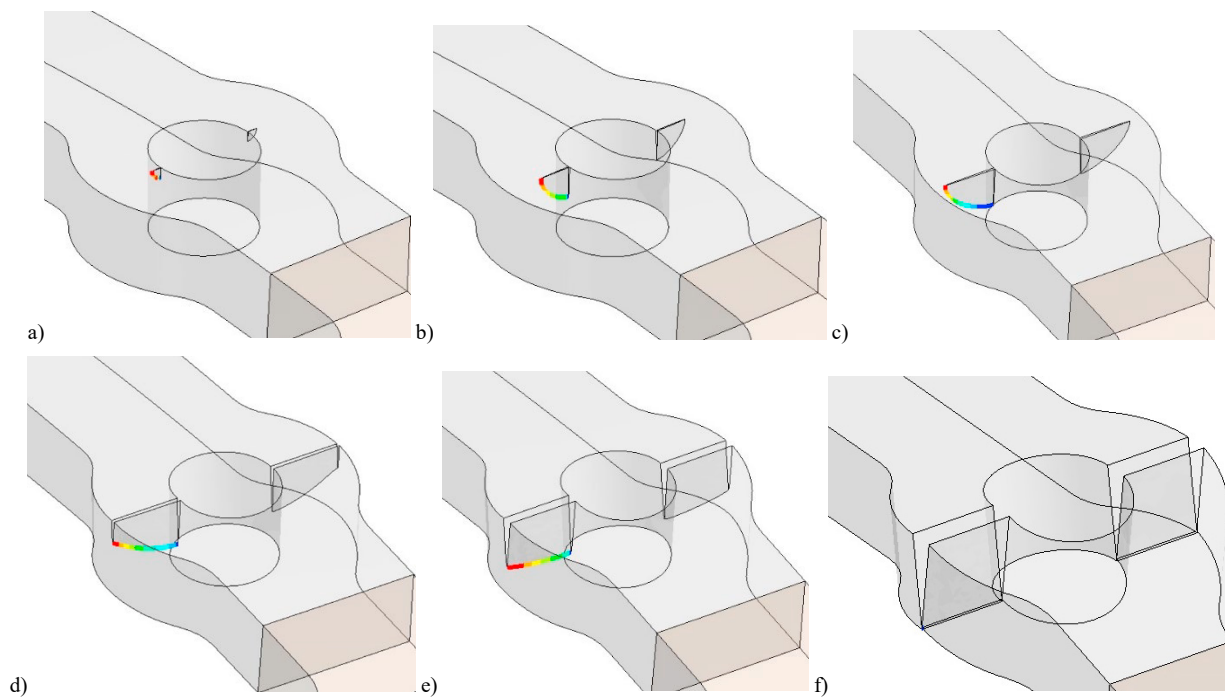


Fig. 4. Crack growth in plate C after a) 1363, b) 9967, c) 14987, d) 16499, e) 16856, f) 16919 cycles

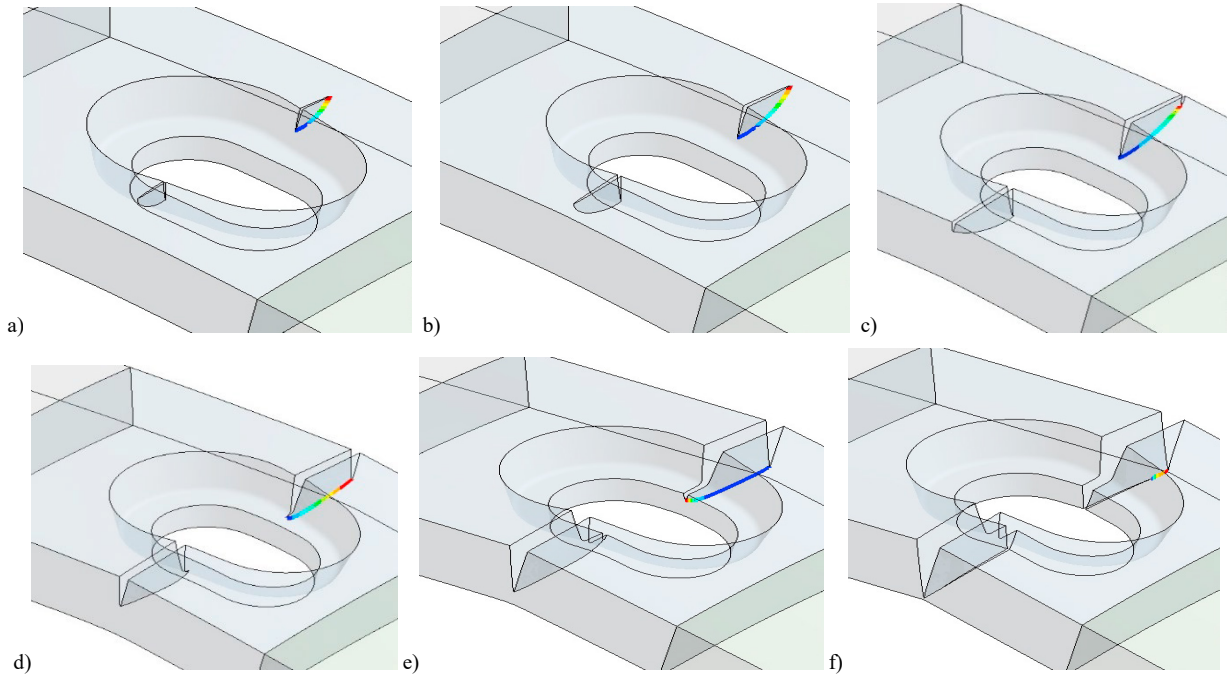


Fig. 5. Crack growth in plate D after a) 3946, b) 34365, c) 37677, d) 38682, e) 39016, f) 39029 cycles

Results for the crack length vs. number of cycles are presented in Fig. 7 for the loading 90 kg, for all 5 different plate geometries. One can see significant differences in life of different geometries, indicating plate D as far the best option.

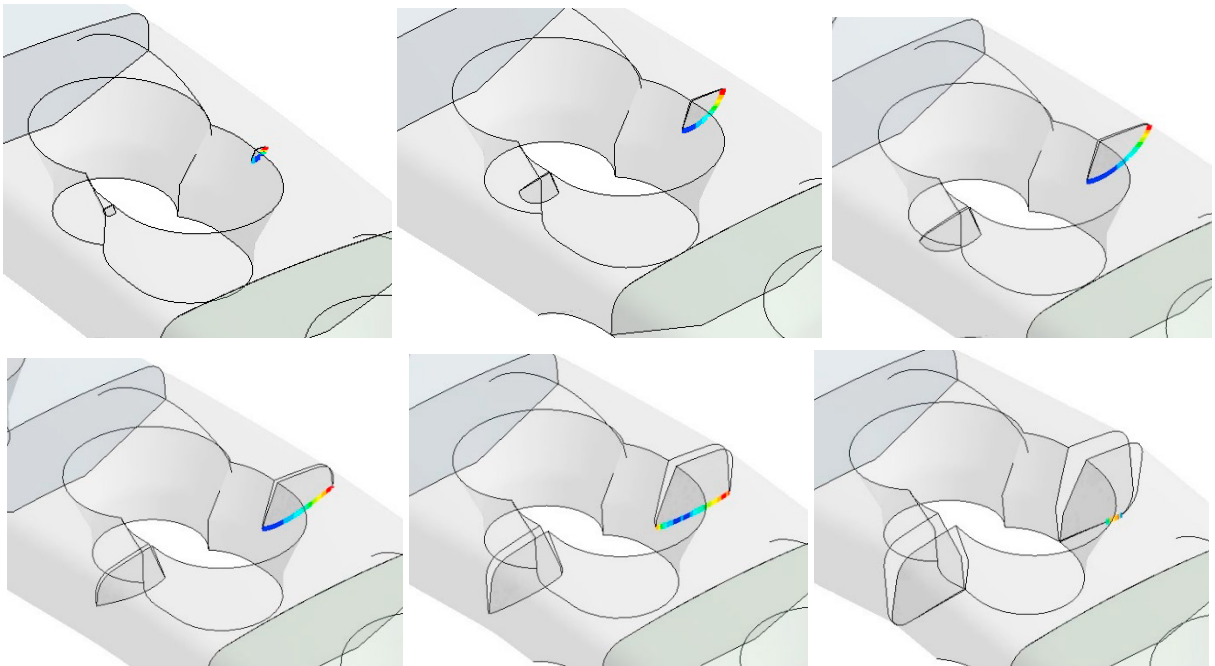


Fig. 6. Crack growth in plate E after a) 3946, b) 34365, c) 37677, d) 38682, e) 39016, f) 39029 cycles

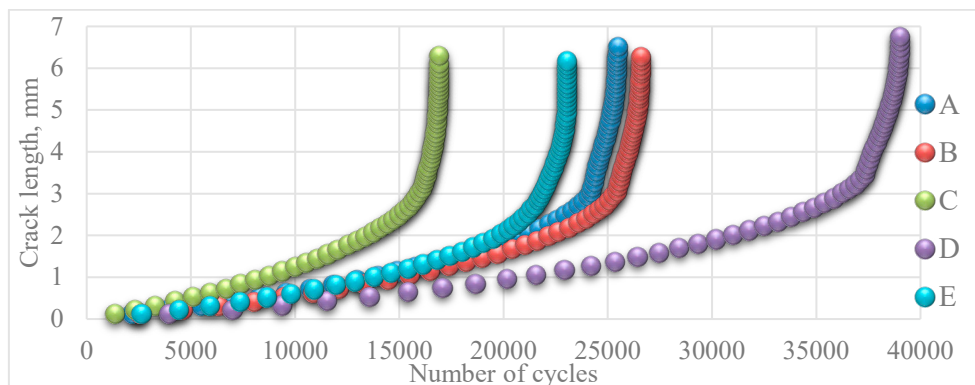


Fig. 7. (a) first picture; (b) second picture.

4. Conclusions

Based on the presented results one can conclude the following that the plate designed for providing most of contact with bone surface has the longest remaining life. This is made possible by changing the direction of crack growth from thickness to the surface and vice versa. Namely, when the surface growth is finished, crack starts growing through the thickness again. This information can be taken in consideration when designing the plates in order to prolong the remaining life after crack initiation. Finally, one can say that the crack grow path is the most important aspect in this analysis.

Acknowledgements

This research was supported by the Ministry of Sciences and Technology of Republic of Serbia through the contracts 451-03-9/2021-14/200105 and 451-03-68/2020 -14/200105.

References

- [1] Moshfeghi T. et al., Fracture Analysis of the Orthopedic Plates used in Joining of the Lower-Limb Bones, CSJ Vol. 36, No. 3: Special Issue, 2015
- [2] Milovanović, A., Sedmak, A., Čolić, K., Tatić, U., Đorđević, B., Numerical Analysis of Stress Distribution in Total Hip Replacement Implant, *Structural Integrity and Life*, 17, 2, 2017, 139-144
- [3] Mijatović, T., Milovanović, A., Sedmak, A., Milović, Lj., Čolić, K., Integrity Assessment Of Reverse Engineered Ti-6Al-4V ELI Total Hip Replacement Implant, *Structural Integrity and Life*, 19, 3, 2019, 237-242
- [4] Čolić, K., Grbović, A., Sedmak, A. Application of Numerical Methods in Design and Analysis of Orthopedic Implant Integrity, *Experimental and Numerical Investigations in Materials Science and Engineering*, Springer Nature Switzerland, 2019, 96-111
- [5] Tatić U., et al., Influence of the Cavity Shape in Restorative Dentistry on the Stress-Strain Distribution in Dentine and Enamel Caused by Polymerization, *Structural Integrity and Life*, 14, 3, 2014, 199-204
- [6] Paunić, M., Balać, I., Sedmak, A., Čolić, K., Numerical Analysis of Geometric Characteristics of Mandible Fixation Plates made of Hydroxyapatite Structures, *Structural Integrity and Life*, 19, 1, 2019, 23-28
- [7] Sedmak, A., Čolić, K., Burzić, Z., Tadić, S., Structural integrity assessment of hip implant made of cobalt-chromium multiphase alloy, *Structural Integrity and Life*, Vol.10, No2, 2010, str. 161-164
- [8] Colic, K., Sedmak, A., Grbovic, A., Tatic, U., Sedmak, S., Djordjevic, B., Finite element modeling of hip implant static loading, *Procedia Engineering*, Volume 149, 2016, Pages 257-262
- [9] Vučetić, F., Čolić, K., Grbović, A., Petrović, A., Sedmak, A., Kozak, D., Sedmak, S., Numerical simulation of fatigue crack growth in titanium alloy orthopaedic plates, *Technical Gazette*, accepted for publishing, 2021
- [10] Sedmak, A., Čolić, K., Grbović, A., Balac, I., Burzić, M., Numerical Analysis of Fatigue Crack Growth of Hip Implant, *Engineering Fracture Mechanics*, Volume 216, paper No. 106492, 2019
- [11] F Vučetić, K Čolić, A Grbović, Z Radaković, S Sedmak, Extended FEM analysis of fatigue crack growth in Ti-6Al-4V orthopaedic plates, *Procedia Structural Integrity* 28, 555-560
- [12] Belytschko T, Lu YY, Gu L. Element-free Galerkin methods. *Int J Numer Methods Eng*. 1994;37(2):229-256.

- [13] Belytschko T, Gu L, Lu YY. Fracture and crack growth by element free Galerkin methods. *Model Simul Mater Sci. Eng.* 1994; 2(3A): 519-534.
- [14] Jovičić G, Živković M, Sedmak A, Jovičić N, Milovanović D., Improvement of algorithm for numerical crack modeling, *Archives Civil Mech Eng.* 2010;10(3):19-35.
- [15] ANSYS manual, <http://research.me.udel.edu/~lwan/teaching/MEx81/ansys56manual.pdf>
- [16] Sedmak A., Computational fracture mechanics: An overview from early efforts to recent achievements. *Fatigue Fract Eng Mater Struct.* 2018;41:2438–2474
- [17] Kraedegh A, Li W, Sedmak A, Grbovic A, Trišović N, Kirin S. Simulation of fatigue crack growth in A2024-T351 “T” welded joint. *Structural Integrity Life.* 2017;17(1):3-6.
- [18] Sghayer A, Grbović A, Sedmak A, Dinulović M, Doncheva E, Petrovski B. Fatigue life analysis of the integral skin-stringer panel using XFEM. *Structural Integrity Life.* 2017;17(1):7-10.
- [19] Eldwaib KA, Grbovic A, Kastratovic G. Fatigue life estimation of CCT specimen using XFEM and Paris law. *Structural Integrity Life.* 2017;17(2):117-124.
- [20] Rakipovski E, Grbović A, Kastratović G, Vidanović N. Application of Extended Finite Element Method for Fatigue Life Predictions of Multiple Site Damage in Aircraft Structure. *Structural Integrity Life.* 2015;15(1):3-6.
- [21] Kraedegh A, Sedmak A, Grbovic A, Sedmak S. Stringer effect on fatigue crack propagation in A2024-T351 aluminum alloy welded joint. *Int J Fatigue.* 2017;105:276-282.